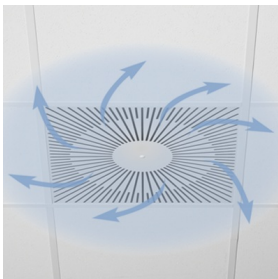
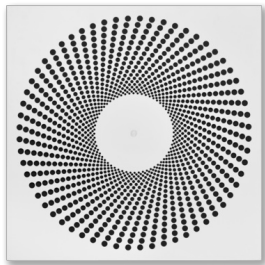
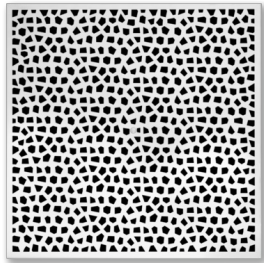


XARTO-R1



## XARTO

FOR MORE REFINED COMFORT ZONES WITH SPECIAL

## DEMANDS ON ARCHITECTURE AND DESIGN, WITH FIXED AIR CONTROL BLADES

Circular and square ceiling swirl diffusers for high volume flow rates at low sound power levels and low differential pressure

- Nominal sizes 600, 625
- Volume flow rate range 31 – 265 l/s or 110 – 954 m<sup>3</sup>/h
- Diffuser face made of galvanised sheet steel, powder-coated
- For supply and extract air
- For variable and constant volume flows
- For all types of ceiling systems, and with an extended border also suitable for freely suspended installation
- Swirl unit inside for the best swirl effect and high induction levels
- Plenum box with acoustically optimised and lockable damper blade
- Ideal for comfort zones

Optional equipment and accessories

- Exposed diffuser face available in RAL CLASSIC colours

## Application



### Application

- Type XARTO ceiling swirl diffusers are used as supply air or extract air diffusers for comfort zones
- Attractive design element for building owners and architects with demanding aesthetic requirements
- Horizontal swirling supply air discharge for mixed flow ventilation
- The efficient swirl creates high induction levels, thereby rapidly reducing the temperature difference and airflow velocity (supply air variant)
- For variable and constant volume flows
- For supply air to room air temperature differences from -12 to +10 K
- For room heights up to 4 m (lower edge of suspended ceiling)
- For all types of ceiling systems
- With an extended border also suitable for freely suspended installation (supply air variant)

### Special characteristics

- For the most demanding requirements of technical function, comfort, and design
- Diffuser face in many different designs
- For all types of ceiling systems, and with an extended border also suitable for freely suspended installation
- Horizontal duct connection

### Nominal sizes

- 600, 625
- 

## Description



### Variants

- XARTO-Q\*: Square diffuser face, square face style
- XARTO-R\*: Square diffuser face, circular face style
- XARTO-C\*: Circular diffuser face, circular face style
- XARTO-\*\*-Z: Supply air
- XARTO-\*\*-A: Extract air

### Parts and characteristics

- Square or circular diffuser face with square or circular face style
- Swirl unit with fixed air control blades
- Plenum box with an optimised equalising element that ensures a uniform airflow through the diffuser face
- Damper blade for volume flow rate balancing, can be set in 15° intervals between 0 and 90°
- Spigot with double lip seal
- Simple installation of the diffuser face due to central fixing screw with decorative cap

### Construction features

- Spigot suitable for circular ducts to EN 1506 or EN 13180
- Spigot with double lip seal

#### **Materials and surfaces**

- Diffuser face, plenum box and cross bar made of galvanised sheet steel
- Swirl unit, spigot and damper blade made of ABS plastic, UL 94, V-0, flame retardant
- Equalising element made of synthetic fibre
- Double lip seal made of rubber
- Diffuser face powder-coated RAL 9010, pure white
- P1: Powder-coated, RAL CLASSIC colour

#### **Standards and guidelines**

- Sound power level of the air-regenerated noise measured according to EN ISO 5135

#### **Maintenance**

- Maintenance-free as construction and materials are not subject to wear
- Inspection and cleaning to VDI 6022
-